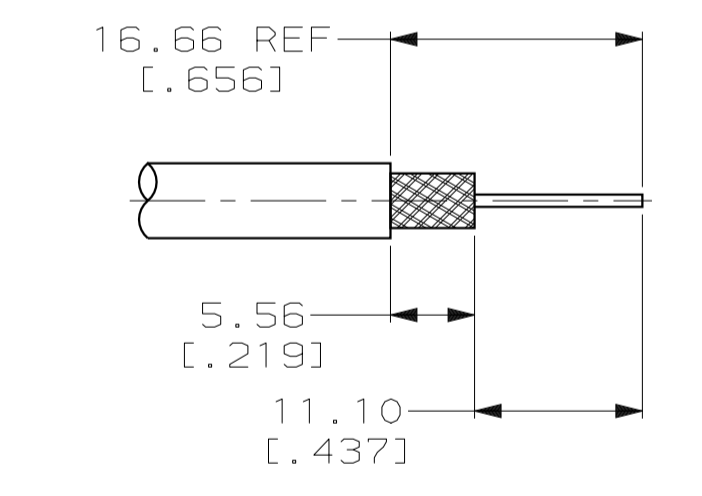
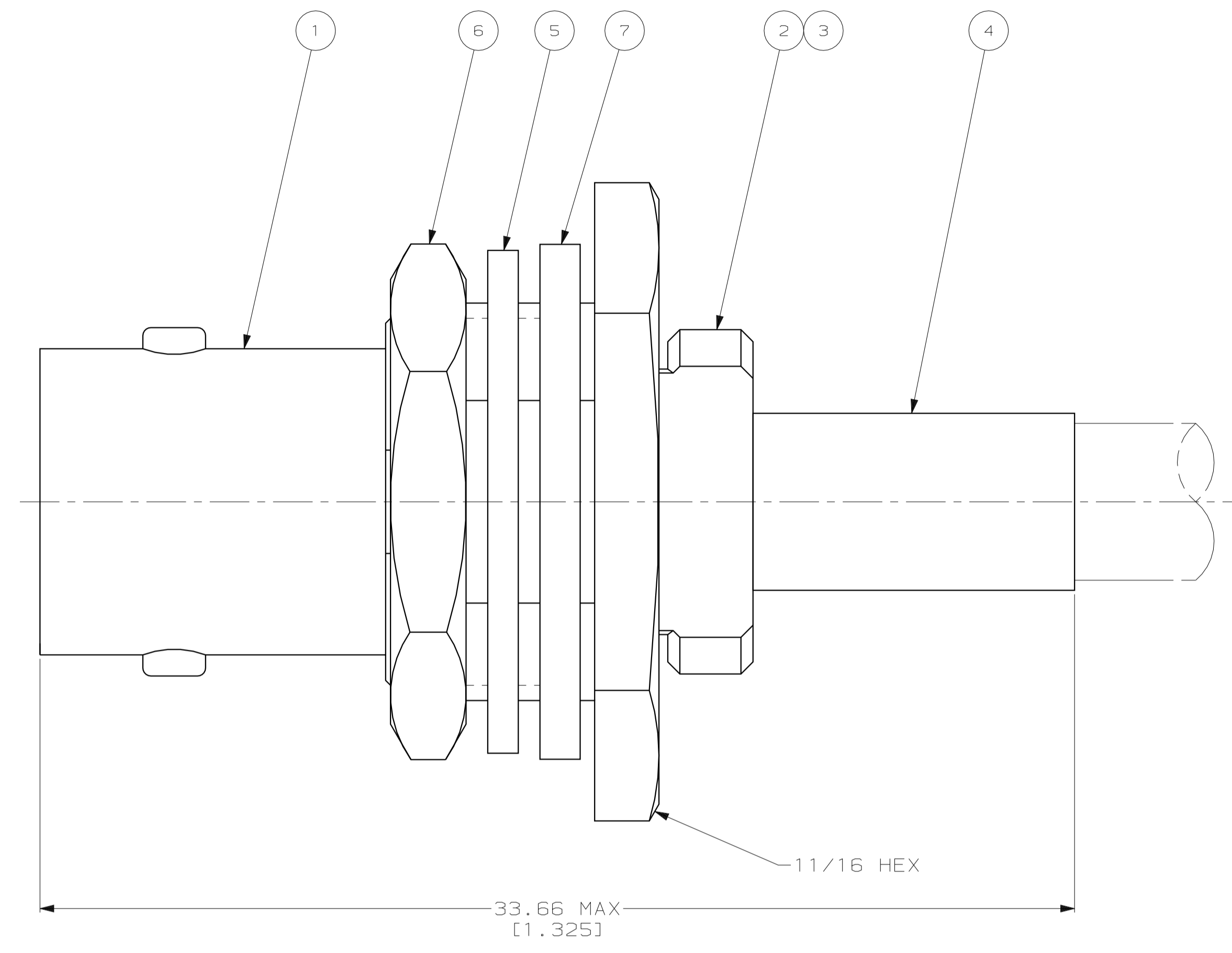
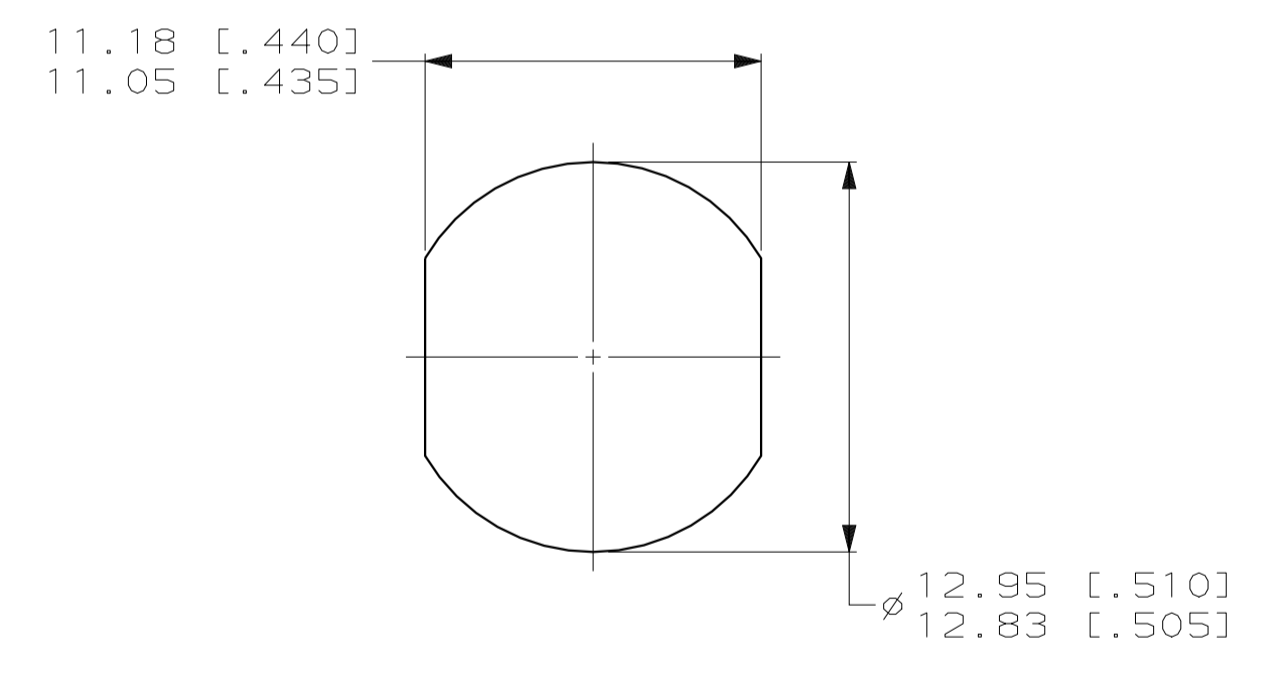


1. USE INSTRUCTION SHEET 1799-3
2. MAXIMUM PANEL THICKNESS = 3.18 [1.25]



RECOMMENDED STRIP LENGTH
SCALE 2:1



RECOMMENDED PANEL CUTOUT
SCALE 4:1

OBSOLETE	-	-	-	-	-	-	-	-	-	-	-	7-329456-2					
OBSOLETE	-	-	-	-	-	-	-	-	-	-	-	7-329456-1					
OBSOLETE	-	-	-	-	-	-	-	-	-	-	-	2-329456-3					
OBSOLETE	RG-55/U, 55A/U, 55B/U, 223/U	69140-2	329633	329631	329632	329099	50793-1	2-329106-1	329800	2-329456-2							
	RG-142/U, 142A/U, 142B/U	69331-1															
	RG-58/U, 58A/U, 58B/U, 58C/U	69140-1	329633	329631	329632	328663	50793-1	2-329106-1	329800	2-329456-1							
SUPERSEDED BY 2-329456-1	-	-	-	-	-	-	-	-	-	-	-	329456					
	CABLE	CRIMP TOOL	⑦	GASKET QTY=1	⑥	JAM NUT QTY=1	⑤	LOCK WASHER QTY=1	④	FERRULE QTY=1	③	CRIMP END ASSEMBLY QTY=1	②	GASKET QTY=1	①	JACK ASSEMBLY, BULKHEAD QTY=1	PART NUMBER

THIS DRAWING IS A CONTROLLED DOCUMENT.

DIMENSIONS: mm (INCHES)	TOLERANCES UNLESS OTHERWISE SPECIFIED:	DWN MICHAEL E. COWHER 15FEB96	CHK FRANK P. MORANA 15FEB96	APVD FRANK P. MORANA 15FEB96	NAME FRANK P. MORANA
0 PLC ±.01	1 PLC ±.02	AMP Incorporated Harrisburg, PA 17105-3608			
2 PLC ±0.41 (.016)	3 PLC ±.05	PRODUCT SPEC			
4 PLC ±.05	ANGLES ±.05	APPLICATION SPEC			
MATERIAL	FINISH	WEIGHT	SIZE A1	CAGE CODE 00779	DRAWING NO C-329456
CUSTOMER DRAWING			SCALE 8:1	SHEET 1 OF 1	REV R